

# MONDEO



Go Further

## Driven By Design

Design is a journey. To arrive at something special, you must imagine, create, refine and re-define. When you sit behind the wheel of the Ford Mondeo, you're instantly connected to the painstaking hours of craft and development that went into every inch of this vehicle. Technologically advanced and stylishly considered, its design will drive you.





## Designed to be noticed

It's the progressive, self-assured silhouette the Mondeo cuts that demands attention. From the iconic trapezoid grille to the panoramic roof on the Titanium model, every inch radiates confidence. This is not a case of style over substance. Each precision element contributes to a highly aerodynamic profile, which ensures the Mondeo doesn't just turn heads, it turns them quickly.





## Smart Technology

The Mondeo offers the features you want, not just the ones you need.







### SYNC® 3

SYNC® 3 is a fully integrated, voice-activated system cleverly designed to let you use your favourite devices while your hands stay on the wheel, and your eyes stay on the road.\* Sync your phone to call your friends, play your favourite music, find the perfect temperature with hands free climate control, and stay on track with the integrated Satellite Navigation System. It comes complete with an 8" capacitive LCD Touch Screen. Best of all, it can be paired to more than one mobile device.



**SYNC® 3 Emergency Assistance<sup>®</sup>** can call emergency services and share your exact GPS location in the unlikely event of an accident that shuts off the fuel pump or activates an airbag.

**Seamless Integration** with your smartphone through Apple CarPlay™, Android Auto™† and Applink™♦ allows you to choose how you remain connected to your world.\*

**At the touch of a finger** it is easy to access the features you want. With a new capacitive 8" touch screen SYNC®3\* is quicker and more responsive than ever before.

## Effortless control

Stay in touch with your world. Just say the word and SYNC® 3 keeps you connected, while your hands stay safely on the wheel and your eyes on the road. And when you've reached your destination, take your hands off the wheel and Mondeo Titanium will steer itself in for a perfect park.

9



### Enhanced Active Park Assist<sup>‡</sup>

Imagine. Perfect parallel parking without your hands ever touching the steering wheel. Enhanced Active Park Assist not only helps you find the right parking space, it steers you in. Perfectly. Put the car into gear. Take your hands off the wheel. All you have to do is work the accelerator and brake. It even steers you out of your park, hands-free.



Overseas model shown.

\*SYNC®3 standard on all models commencing May 2016 production. Not all SYNC®3 features are compatible with all phones, for full compatibility list see [www.ford.com.au/sync](http://www.ford.com.au/sync). †To use Emergency Assistance, your phone must be paired and in mobile reception range. ‡Apple CarPlay™ requires phone with compatible version of Apple iOS, active data service, and connection cable (sold separately). SYNC® does not control Apple CarPlay™ while in use. Apple is solely responsible for their functionality. Message and data rates may apply. Apple CarPlay™ Siri Eyes Free, iPod and iPhone are trademarks of Apple Inc. registered in the US and other countries. †Android Auto™ requires phone with compatible version of Android Auto™ and active data service. Android Auto™ requires phone with compatible version of Android Auto™ and active data service. Android Auto™ and Google Maps are trademarks of Google Inc. †Ford Applink™ is available on selected SYNC® models and is compatible with select smartphone platforms. †Local laws may prohibit the use of some features. Check your local road rules before using. ‡Available on Titanium models only.



# Smart features

Whether you're driving in stop-start traffic, reversing out of a tight spot, or just trying to keep your younger drivers safer – Ford's latest smart technologies have got you covered.



Mondeo Titanium Hatch shown.

## Active City Stop†

When traffic is crawling along, it can be easy to miss someone suddenly stopping. In speeds of less than 40km/h, if Active City Stop detects that the car in front has unexpectedly stopped, it automatically applies the brakes if you don't.\*

\*Active City Stop may help avoid, or minimise the impact of a collision between speeds of 3.6 and 40km/h. It is not a substitute for driver alertness. Function may not operate in some driving and road conditions, or adverse weather. †Available on Trend and Titanium models. ‡Will be available on Ambiente from June 2015 production. ††Driver-assist features are supplemental and do not replace the driver's judgement. †††May help avoid or minimise the impact of a collision. It is not a substitute for driver alertness. Function may not operate in some driving and road conditions.

## Pre-Collision Assist with Pedestrian Detection†

Designed to scan the traffic ahead and warn you if it senses the possibility of a collision. If a collision is likely, it can apply the brakes. This technology can also detect pedestrians.<sup>‡</sup>



## BLIS (Blind Spot Information System)†

BLIS is your extra set of eyes. When sensors detect that a vehicle has entered your blind spot, an indicator light appears in your side mirror.



## Rear View Camera††

Reverse like you have eyes in the back of your head. The Rear View Camera lets you clearly see what's behind you, while the beep of the rear parking sensors tells you how close you are. The system even automatically turns down your music so you can hear the beeps clearly.



## MyKey™

Handing over the keys to the younger members of your family is a tough call. MyKey™ helps make sure that they'll drive as if you were in the car with them. You can program it to remind them to put on seat belts, limit their speed, keep their music volume down and concentrate on the drive, not their phone.



## Efficient Performance

We give you the choice of two of our most fuel efficient and powerful engines and fuel saving technologies. Then we top it all off with Ford's latest performance technologies that give you greater control and ease of driving.



### Adaptive Cruise Control\*

Cruise Control is great on the open road. But, even here, you can find traffic. So instead of having to turn the system on and off, it will adapt. Sensors scan the traffic ahead, updating their positions 20 times a second. If they sense that traffic has slowed, your vehicle will slow also. When the traffic clears, it returns to your preset speed.

Mondeo Titanium Hatch shown.



### 2.0L TDCi diesel

Our highly fuel-efficient 2.0L TDCi diesel engine is a gutsy performer. Its turbocharged four cylinders deliver responsive power and torque that builds low in the rev range.



### 2.0L EcoBoost

The combination of turbocharging, direct fuel injection and twin independent variable camshaft timing (Ti-VCT) in our 2.0L EcoBoost delivers more to you. This four cylinder petrol engine is smaller and lighter than larger displacement engines so it delivers superior fuel economy, yet there is no compromise on power.



### 6-Speed Automatic™ with Paddle Shifters

The ease of an automatic and the thrill of a manual. With Paddle Shifters on the steering wheel, similar to those used by racing drivers, our automatic transmission lets you shift through gears, smoothly and effortlessly, without having to use a clutch.

\*Available on Trend and Titanium models only. Driver-assist features are supplemental and do not replace the driver's judgement.



## Exceptional fuel savings

Mondeo knows when to work hard, but is smart enough to know when to conserve power and fuel.



### Auto Start-Stop\*^

Think how much time your engine spends idling in heavy traffic or at lights. Then think how much fuel you could save if you switched it off every time. That's what the Mondeo diesel models automatically do when you idle. Release the brake to go and the engine smoothly restarts, giving you a 4% to 10%# improvement in your fuel efficiency.

### Electric Power Assisted Steering

Stable, responsive steering is the hallmark of a quality drive. Electric Power Assisted Steering (EPAS) adjusts to feel lighter in slow traffic and 'heavier' at higher speeds for greater control. It also adapts to changing conditions, like cross winds, to keep you on track. But it only comes to your assistance when it's needed, saving you fuel.



## Striking features

From the leather steering wheel and dual zone climate control, to smart driver-assist technologies and voice-activated controls, the cleverly designed Mondeo comes with all the features to ensure you arrive in style.

### Panoramic roof with power sunshade\*

If there were an award for best view from a car, this would be it. The Panorama glass roof takes up nearly all of the roof area, so everyone inside gets to see more of what's going on outside. It also comes with a power sunshade for those extra sunny days.





Mondeo Titanium shown.

## Interior. Designed.

Wherever you look inside the Mondeo's cabin, you'll find a perfect blend of form and function. Sleek, elegant interiors house the Mondeo's intuitive features, while the ergonomic styling makes sure they're always within reach.



Mondeo Titanium shown.



### Adaptive LED headlamps\*

Not only do these lights automatically turn themselves on and off with changes in natural light, but they also help you see around corners. A standard headlight's beam is usually fixed on one spot. These lights change the beam's angle, pattern and intensity according to your driving conditions so it's always on the road, no matter what.

### Dual zone climate control

Everyone's idea of comfort is different. Our dual zone climate control allows both you and your front seat passenger to choose the heating and cooling settings you prefer for your own personal space. So everyone's happy.



Mondeo has been designed to include Ford's latest safety technologies to give you greater peace of mind.







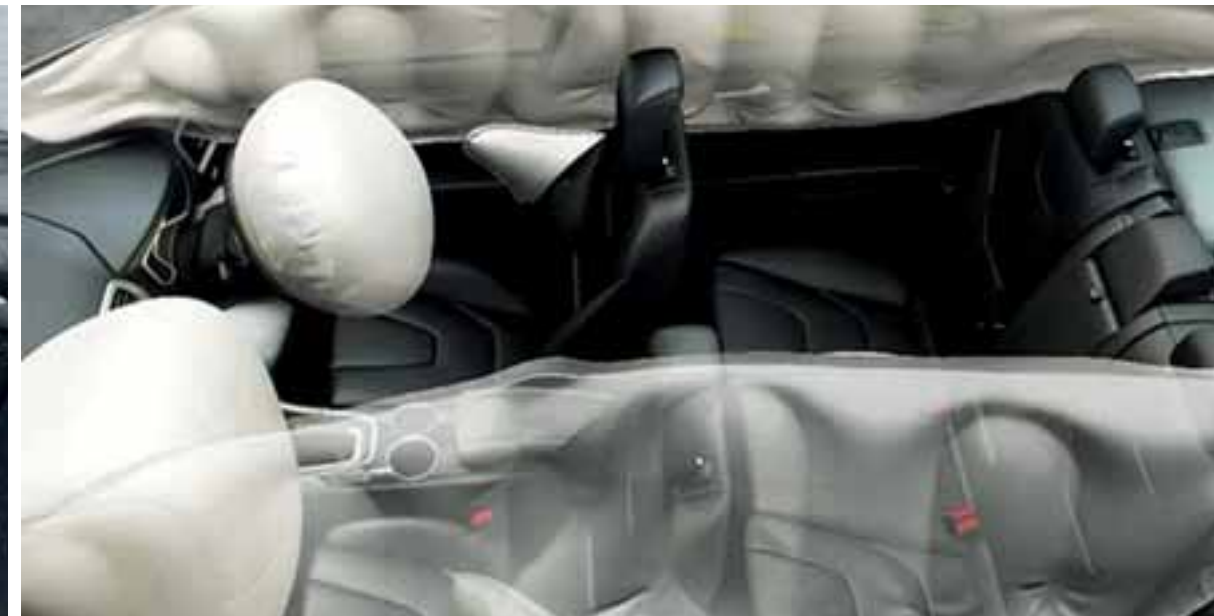
#### Rear inflatable seat belts

These seat belts provide extra protection for outer passengers in the back. They distribute the force of an impact across a wider area of the torso and help support the head and neck. They are also designed to hold people in the correct seating position, which can help reduce the risk of injury in a front or side impact.

Mondeo Ambiente interior shown.

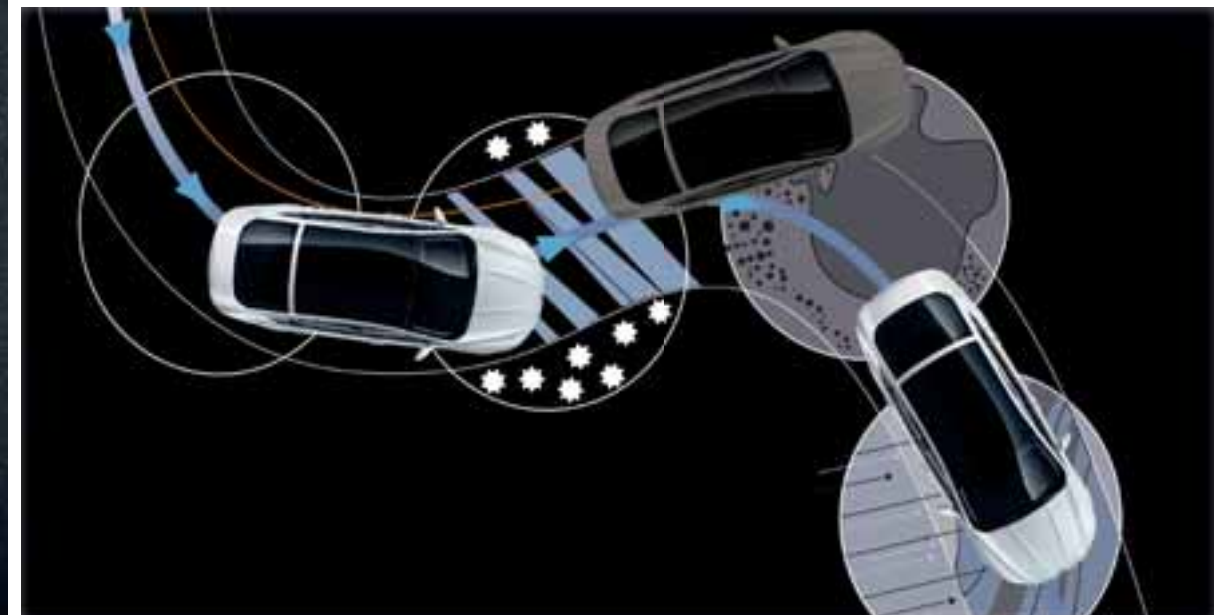
## Safety

The Mondeo offers high levels of protection and control that are reflected in its 5-star ANCAP safety rating. Airbags, including side curtain airbags and rear inflatable seat belts, help maximise occupant protection, while Dynamic Stability Control helps keep you on track, especially around corners or when you need to swerve.



#### Airbags all-round

Knowing you're surrounded by protection is a good feeling. With driver and passenger airbags, seat-mounted side airbags and one for the driver's knee in the front, as well as side-curtain airbags for people in the front and back, that's a lot of peace of mind.



#### Dynamic Stability Control (DSC)

The combination of Dynamic Stability Control (DSC) and Traction Control helps keep you connected to the road and in control, especially around corners and when overtaking. Together with ABS (Anti-lock Braking System) they help reduce the chances of wheel spin, wheel lock and over- or under-steering.



5-Door Hatch



Wagon







Powertrain

- 2.0L GTDi EcoBoost
- 149kW @ 5400 RPM\*
- 345Nm @ 2700-3500 RPM\*
- 8.2L/100 kms (8.5 for Wagon)^
- 6-Speed SelectShift® transmission
- 2.0L TDCi Diesel
- 132kW @ 3500 RPM\*
- 400Nm @ 2000-2500 RPM\*
- 5.1L/100 kms (5.3 for Wagon)^
- 6-Speed PowerShift® transmission

Driver Assist

- Hill Launch Assist

Exterior

- 16" Alloy Wheels (Hatch)
- 17" Alloy Wheels (Wagon)
- Projector Headlamps w/DTRL
- Front Fog Lamps
- Front Parking Sensors
- Rear Parking Sensors
- Rear LED Tail lamps
- Privacy Glass – Rearward of front windows
- Dual Exhaust

Interior (Comfort & Convenience)

- Cruise Control (w/speed limit)
- Dual-Zone Climate Control
- Global Open/Close – Windows
- Follow-me-home-lighting
- Driver Lumbar Support
- 60:40 Rear Split Seats
- Leather Steering Wheel/Shifter
- Paddle Shifters
- Electronic Park Brake
- Cloth Seats

Infotainment

- SYNC® 3 with Applink™†
- 8" Capacitive Touch Screen
- Bluetooth & Enhanced Voice Control
- Satellite Navigation with Traffic Message Channel®
- DAB+/AM/FM Radio
- USB, RCA, SD Inputs
- Apple CarPlay™‡ and Android Auto™‡ integration

Safety

- Driver & front passenger airbags
- Thorax and curtain airbags
- Driver Knee Airbag
- Inflatable Rear Seat belts
- ABS, EBD, TCS, EBA, DSC
- All Seat Beltminder
- Power Child Locks
- Ford MyKey®
- Rear View Camera
- Emergency Assistance

\*All petrol performance figures measured using premium fuel (95 RON). \*Figures obtained from controlled testing using ADR 81/02 combined cycle. †Traffic information is provided through an arrangement with Intellematics Australia Pty Ltd. Traffic information is based on data provided with the permission of one or more third parties. Should Ford's arrangement with Intellematics Australia Pty Ltd. cease for any reason, the ongoing provision of traffic information cannot be guaranteed. ‡On vehicles commencing production from May 2016. Not all SYNC®3 features are compatible with all phones. Ford Applink™ is available on selected SYNC® models and is compatible with select smartphone platforms. ‡On vehicles commencing production from May 2016. Apple CarPlay™ requires phone with compatible version of Apple iOS, active data service, and connection cable (sold separately). SYNC® does not control Apple™ while in use. Apple is solely responsible for their functionality. Message and data rates may apply. Apple CarPlay™ Siri Eyes Free, iPod and iPhone are trademarks of Apple Inc. registered in the US and other countries. ‡Android Auto™ requires phone with compatible version of Android Auto™ and active data service. Android Auto™ and Google Maps are trademarks of Google Inc.







## Powertrain

- 2.0L GTDi EcoBoost
- 177kW @ 5300 RPM\*
- 345Nm @ 2300-4900 RPM\*
- 8.2L/100 kms<sup>^</sup>
- 6-Speed SelectShift® transmission
- 2.0L TDCi Diesel
- 132kW @ 3500 RPM\*
- 400Nm @ 2000-2500 RPM\*
- 5.1L/100 kms (5.3 for Wagon)<sup>^</sup>
- 6-Speed PowerShift® transmission

## Exterior

- 17" Alloy Wheels
- Puddle Lamps
- Auto Fold Exterior Mirrors
- Keyless Entry with Push Button Start

## Interior (Comfort &amp; Convenience)

- Auto Dimming Rear View Mirror
- 8-Way Power Seat – Driver & Passenger
- Power Lumbar Support – Driver & Passenger
- Driver Seat Memory
- Heated Front Seats
- Auto Headlamps
- Auto High Beams
- Rain-Sensing Wipers
- Partial Leather Sports Seats

## Driver Assist

- Adaptive Cruise Control
- Active City Stop
- Pre-Collision Assist with Pedestrian Detection
- Lane Keeping Aid
- Lane Departure Warning
- Driver Impairment Monitor

\*All petrol performance figures measured using premium fuel (95 RON).  
<sup>^</sup>Figures obtained from controlled testing using ADR 81/02 combined cycle.







Titanium - In addition to Trend

- Powertrain
- 2.0L GTDi EcoBoost
  - 177kW @ 5300 RPM\*
  - 345Nm @ 2300-4900 RPM\*
  - 8.5L/100 kms^
  - 6-Speed SelectShift® transmission
- 
- 2.0L TDCi Diesel
  - 132kW @ 3500 RPM\*
  - 400Nm @ 2000-2500 RPM\*
  - 5.1L/100 kms (5.3 for Wagon)^
  - 6-Speed PowerShift® transmission

- Exterior
- 18" Alloy Wheels
  - Bodykit – Front/Side Skirts
  - Power Tailgate
  - Adaptive Suspension
  - Adaptive LED Headlamps
  - Dynamic Headlamp Levelling
  - Signature lighting
  - LED Daytime Running Lamps
  - Panoramic roof – Hatch (Fixed)
  - Panoramic roof – Wagon (Power)
  - Headlamp Jetwash with Fluid Level Sensor

- Interior (Comfort & Convenience)
- Leather Accented Sport Seats
  - Heated Rear Seats
  - Ambient Lighting (multi-colour)
  - Scuff Plates
  - Power reach/rake Steering Column
  - Aluminium pedal covers
  - Reading Lights – 2nd Row
  - Rear Floor Mats

- Driver Assist
- Blind Spot Information System
  - Enhanced Active Park Assist

\*All petrol performance figures measured using premium fuel (95 RON).  
^Figures obtained from controlled testing using ADR 81/02 combined cycle.





Colours

32

Complementing the Mondeo's stylish design and satisfying your personal taste is a range of attractive metallic and solid colours.

Trim & Wheels



Magnetic\*



Ruby Red\*



Blazer Blue



White Platinum Tri Coat\*



Frozen White



Deep Impact Blue\*



Moondust Silver\*



Panther Black\*

Ambiente



Seat insert: Cloth Ebony  
Seat bolster: Cloth Ebony



16" x 6.5" alloy wheel  
Hatch



17" x 7.5" alloy wheel  
Wagon

Trend



Seat Insert: Perforated Miko Charcoal Black  
Seat Bolster: Salerno Leather Charcoal Black



17" x 7.5" alloy wheel  
Hatch & Wagon

Titanium



Seat Insert: Salerno Leather Charcoal Black  
Seat Bolster: Salerno Leather Charcoal Black



18" x 8.0" alloy wheel  
Hatch & Wagon

\*Metallic Colours. Prestige paint is an option that incurs an additional charge.





Mondeo Titanium Wagon shown fitted with Carry Bars and 10 double spoke 18" alloy wheels.

Tow pack

Whether your towing requirements are for work or play, the Genuine Ford Tow Pack will make towing a breeze.



Mudspats

If your average drive is not just from A – B then these hard-wearing and durable mudspats will help protect your new Mondeo from mud, stones and debris.



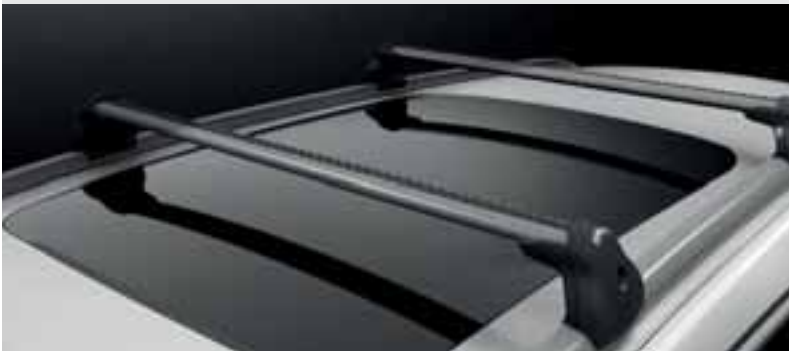
Dog Guard/Cargo Barrier

From your groceries to your best friend, this practical and strong partition will keep everything safely secured in the back while you enjoy the drive.



Carry Bars

When you need to transport a bit extra, these strong yet lightweight carry bars can be easily installed and then just as easily removed when you're not using them.



Accessories

Like the hem of a perfectly tailored suit, your choice of vehicle accessories are the final details that make sure your Mondeo has everything it needs to suit you and your lifestyle.

Body Style	Hatch			Wagon		
	Ambiente	Trend	Titanium	Ambiente	Trend	Titanium
Exterior styling						
Alloy Wheel Locking Nut Kit	A	A	A	A	A	A
10 double spoke alloy wheel 18" – Silver <sup>1</sup>	–	–	A	–	–	A
5 spoke alloy wheel 18" – Silver <sup>1</sup>	–	–	A	–	–	A
Rear Spoiler	A	A	–	–	–	–
Exterior protection						
Bonnet Protector <sup>2</sup>	A	A	A	A	A	A
Front Mudspats	A	A	–	A	A	–
Rear Mudspats	A	A	–	A	A	–
Weathershields <sup>2</sup>	A	A	A	A	A	A
Towing and carrying						
Towpack <sup>4</sup>	A	A	A	A	A	A
Carry bars	A	A	A	A	A	A
Rhino Rack carry bar accessories <sup>2, 3</sup>	A	A	A	A	A	A
Interior styling, comfort and storage						
Carpet mats – Set of four	A	A	S	A	A	S
All weather mats – Set of four	A	A	A	A	A	A
Dog Guard Front	–	–	–	A	A	–
Dog Guard Rear	–	–	–	A	A	A
Cargo Barrier	–	–	–	A	A	A
Boot scuff guard	A	A	A	A	A	A
Anti Slip Cargo Mat (Not compatible with Cargo Management System)	–	–	–	A	A	A
Reversible Cargo Mat (Not compatible with Cargo Management System)	A	A	A	A	A	A
Cargo swing net	A	A	A	A	A	A
Cargo organiser	A	A	A	A	A	A
Ash Tray - coin cup	A	A	A	A	A	A
In car electrical						
Fridge 'Day Tripper' 15L <sup>2</sup>	A	A	A	A	A	A
Garmin NuviCam LMT with built in Dash Cam <sup>2</sup>	A	A	A	A	A	A
Lumen iPad Cradle Kit <sup>2</sup>	A	A	A	A	A	A

S = Standard O = Optional A = Accessory that can be added at any time. – = Not available

1. Wheels and tyres sold separately when fitted in Dealership. 2. This accessory is a Supplier Branded Accessory and is not manufactured or warranted by Ford. The warranty is provided by the manufacturer of the accessory. Contact your authorised Ford Dealer for details of the accessory manufacturer's warranty applicable to this accessory. 3. Attaches to Genuine Ford carry bars (sold separately). 4. Subject to State and Territory regulations. Maximum braked load rating 1200kg 2.0L Petrol GTDi/ 1600 kg 2.0L Diesel.



# Specifying your Mondeo

## Mechanical specifications For vehicles produced from May 2016<sup>1</sup>

Engine type	2.0 Litre EcoBoost		2.0 Litre Duratorq Turbo Diesel	
Max Power Output	Ambiente - 149kW @ 5400rpm Trend / Titanium – 177kW @ 5300rpm		132kW @ 3500rpm	
Max torque	Ambiente – 345Nm @ 2700-3500rpm Trend / Titanium – 345Nm @ 2300-4900rpm		400Nm @ 2000-2500rpm	
Cylinders	4 in line		4 in line	
Engine size (cc)	1999		1997	
Valve Gear	DOHC with 4 valves per cylinder, twin independent variable cam timing		DOHC with 4 valves per cylinder	
Compression Ratio	10.0:1		16.7:1	
Transmission	SelectShift 6-speed automatic transmission		PowerShift 6-speed dual clutch transmission	
Towing Capacity <sup>4, 5</sup>				
Maximum Towing Capacity - Braked	1200kg		1600kg	
Maximum Towing Capacity - Unbraked	750kg		750kg	
Fuel	Hatch	Wagon	Hatch	Wagon
Consumption – Combined (L/100 km)	Ambiente 8.2L/100km Trend 8.2L/100km Titanium 8.5L/100km	Ambiente 8.5L/100km	All Models 5.1L/100km	All Models 5.3L/100km
CO <sub>2</sub> Emissions(g/km)	Ambiente 192g/km Trend 192g/km Titanium 197g/km	All Models 199g/km	All Models 135g/km	All Models 140g/km
Fuel Tank Capacity (litres)	62	62	62	62
Capless Refuelling	S	S	S	S
Suspension & Brakes				
Front	Independent MacPherson strut with stabiliser bar			
Rear	Independent integral link with stabiliser bar			
Brake Disc Dimensions – Front	300 x 28	316 x 28	300 x 28	316 x 28
Brake Disc Dimensions - Rear	302 x 11	316 x 11	302 x 11	316 x 11
Kerb Weight				
Ambiente	1605	1649	1659	1703
Trend	1629	–	1683	1713
Titanium	1690	–	1744	1782
Gross Vehicle Mass (GVM) Kerb Weight				
Ambiente	2140	2190	2190	2240
Trend	2210	–	2260	2310
Titanium	2230	–	2280	2320

## Dimensions

Body Style	Hatch	Wagon
<b>Minimum Turning Circle – Diameter kerb to kerb (m)</b>	11.6	11.6
<b>Interior Dimensions (mm)</b>		
Front Headroom	Ambiente / Trend – 987 Titanium – 964	Ambiente / Trend – 988 Titanium – 946
Front Legroom	1128	1128
Front Shoulder room	1469	1469
Front Hip room	1396	1396
Rear Headroom	Ambiente / Trend – 961 Titanium – 960	Ambiente / Trend – 992 Titanium – 946
Rear Legroom	972	972
Rear Should room	1410	1410
Rear Hip room	1381	1381
<b>Exterior Dimensions</b>		
Overall Length	4871	4867
Overall Width (with/without mirrors)	2121/1852	2121/1852
Overall Height	1482	1501

1. Please consult your Ford Dealer to confirm vehicle production date. 2. All petrol performance figures are measured using premium fuel (95 RON). 3. Figures obtained from controlled tests using ADR 81/02. Actual fuel consumption and CO<sub>2</sub> emissions will depend on many factors including driving habits, prevailing conditions and your vehicle's equipment, condition and use. 4. Subject to State and Territory regulations. 5. When fitted with a Genuine Ford heavy duty towpack. Towball download and rear axle limits must not be exceeded. Please refer to your Ford Dealer for advice. 6. Kerb weight includes full tank of fuel, without occupants or luggage/cargo, added options, additional structures and towball download when towing.



## Dimensions (continued)

Body Style	Hatch	Wagon
<b>Cargo Compartment Dimensions (mm)</b>		
Seats Upright	1121	1117
Rear Seats Folded	1961	1974
Loading width between wheelhouses	1130	1141
<b>Luggage Capacity (L)</b>		
Seats Upright (Laden to Roof)	557	730
Rear Seats Folded (Laden to Roof)	1356	1605
Seats Upright (Laden to Package Tray)	458	500

## Specifications and options

Body Style	Hatch			Wagon		
Model	Ambiente	Trend	Titanium	Ambiente	Trend	Titanium
<b>Powertrain</b>						
2.0 Litre EcoBoost with SelectShift 6-speed automatic transmission	S	S	S	S	–	–
2.0 Litre Duratorq Turbo Diesel with PowerShift 6-speed dual clutch transmission	O	O	O	O	S	S
<b>Ride and Handling</b>						
Adaptive Suspension	–	–	S	–	–	S
Self levelling suspension	–	–	–	S	–	–
16" Alloy wheels with 215/60 R16 tyres <sup>8</sup>	S	–	–	–	–	–
17" Alloy wheels with 235/50 R17 tyres <sup>8</sup>	–	S	–	S	S	–
18" Alloy wheels with 235/45 R18 tyres <sup>8</sup>	–	–	S	–	–	S
16" Spare wheel with 215/60 R16 tyre <sup>9</sup>	S	S	S	–	–	–
Mini spare wheel with 125/70 R17 tyre <sup>9</sup>	–	–	–	S	S	S
<b>Exterior</b>						
Active Grille Shutters (diesel only)	S	S	S	S	S	S
Black finish roof rails	–	–	–	S	S	–
Bright finish roof rails	–	–	–	–	–	S
Body coloured, power adjustable heated mirrors	S	–	–	S	–	–
Body coloured, power adjustable heated mirrors with puddle lamps and auto fold	–	S	S	–	S	S
Body styling kit (front and rear bumpers, side skirts, fog lamps, unique lower & upper grille and rocker panel moulding)	–	–	S	–	–	S
Daytime Running Lamps	S	S	–	S	S	–
LED Daytime Running Lamps	–	–	S	–	–	S
Door handles – Body colour	S	S	–	S	S	–
Door handles – Body colour with chrome inserts	–	–	S	–	–	S
Dual exhaust	S	S	S	S	S	S
'Follow-me-home' lighting	S	S	S	S	S	S
Front fog lamps	S	S	S	S	S	S
Halogen Projector Headlamps with manual headlamp levelling and cornering lamps	S	S	–	S	S	–
Adaptive LED Headlamps with signature lighting and dynamic levelling	–	–	S	–	–	S
Rear LED tail lamps	S	S	S	S	S	S
Privacy glass rearward of B-pillar	S	S	S	S	S	S
Prestige paint	O	O	O	O	O	O

S = Standard – = Not available O = Option that can be ordered before a vehicle is manufactured. P = Part of option pack A = Accessory

7. Measured in accordance with ISO 3832. Figures and equipment levels by model may vary. 8. Set of four. 9. If the spare wheel, rim or tyre size differs from the other wheels fitted, the vehicle should be driven with caution and the standard wheel and tyre should be fitted as soon as possible.



# Specifying your Mondeo

38 Specifications and options (continued) For vehicles produced from May 2016<sup>10</sup>.

Body Style	Hatch			Wagon		
	Ambiente	Trend	Titanium	Ambiente	Trend	Titanium
<b>Seating</b>						
Partial leather sports seats	–	S	–	–	S	–
Leather accented sport seats	–	–	S	–	–	S
Heated driver and passenger seats	–	S	S	–	S	S
Heated rear seats	–	–	S	–	–	S
Driver's seat – power adjustable (8 way) with memory	–	S	S	–	S	S
Driver's seat – manual adjustable (4-way)	S	–	–	S	–	–
Driver's seat – power lumbar adjust (2-way)	–	S	S	–	S	S
Passenger seat – power adjustable (8-way)	–	S	S	–	S	S
Passenger seat – manual adjustable (2-way)	S	–	–	S	–	–
Passenger seat – power lumbar adjust (2-way)	–	S	S	–	S	S
Front head restraints (4-way)	S	S	S	S	S	S
Rear head restraints (2-way)	S	S	S	S	S	S
Front seat map pockets	S	S	S	S	S	S
Rear seat centre armrest with covered storage and cup holders	–	S	S	–	S	S
60/40 slit fold rear seat	S	S	S	S	S	S
<b>Instrumentation and Controls</b>						
Automatic Headlamps ON/OFF feature	–	S	S	–	S	S
Automatic Highbeam ON/OFF feature	–	S	S	–	S	S
Instrument cluster: speedometer, tachometer, odometer, tripmeter, fuel gauge and water temperature gauge, digital clock	S	S	S	S	S	S
Leather wrapped steering wheel	S	S	S	S	S	S
Leather wrapped gear knob / shifter	S	S	S	S	S	S
Manual headlight levelling	S	S	–	S	S	–
Smart Keyless entry with push button start	–	S	S	–	S	S
Manual Telescopic and tilt adjustable column	S	S	–	S	S	–
Power Telescopic and tilt adjustable column	–	–	S	–	–	S
Trip computer: Includes average fuel consumption, average speed, outside air temperature, trip reset, distance to empty	S	S	S	S	S	S
<b>Comfort and Convenience</b>						
Dual zone climate control	S	S	S	S	S	S
Ambient lighting (multi-colour)	–	–	S	–	–	S
Automatic rain sensing front windscreen wipers with variable sensitivity adjustment	–	S	S	–	S	S
Brushed stainless scuff plates (front doors)	–	–	S	–	–	S
Carpet mats (front)	S	S	S	S	S	S
Carpet mats (rear)	–	–	S	–	–	S
Centre console with storage box and two front cupholders	S	S	S	S	S	S
Courtesy light (delay and theatre dimming)	S	S	S	S	S	S
Driver and front passenger sun visors with illuminated vanity mirror	S	S	S	S	S	S
Electrochromatic rear vision mirror (auto-dimming)	–	S	S	–	S	S
Front map lights	S	S	S	S	S	S
Illuminated entry system	S	S	S	S	S	S
Luggage compartment 12V power point	–	–	–	S	S	S
Luggage compartment illumination	S	S	S	S	S	S
Luggage Management System	–	–	–	S	S	S
Panoramic Roof (Fixed Glass)	–	–	S	–	–	–
Panoramic Roof (Power openable)	–	–	–	–	–	S
Power front windows with driver & passenger one-touch up & down and global open / close	S	S	S	S	S	S
Power rear windows with global open / close	S	S	S	S	S	S
Power tailgate	–	–	S	–	–	S

10. Please consult your Ford Dealer to confirm vehicle production date. 11. Not all SYNC®3 features are compatible with all phones. Ford Applink™ is available on selected SYNC® models and is compatible with select smartphone platforms. 12. Apple CarPlay™ requires phone with compatible version of Apple iOS, active data service, and connection cable (sold separately). SYNC® does not control Apple CarPlay™ while in use. Apple is solely responsible for their functionality. Message and data rates may apply. Apple CarPlay™ Siri Eyes Free, iPod and iPhone are trademarks of Apple Inc. registered in the US and other countries. 13. Android Auto™ requires phone with compatible version of Android Auto™ and active data service. Android Auto™ and Google Maps are trademarks of Google Inc. 14. Traffic information is provided through an arrangement with Intelmatics Australia Pty Ltd. Traffic information is based on data provided with the permission of one or more third parties. Should Ford's arrangement with Intelmatics Australia Pty Ltd cease for any reason, the ongoing provision of traffic information cannot be guaranteed. 15. The Bluetooth®



## Specifications and options (continued) For vehicles produced from May 2016<sup>10</sup>.

Body Style	Hatch			Wagon		
	Ambiente	Trend	Titanium	Ambiente	Trend	Titanium
<b>Comfort and Convenience</b> (continued)						
Rear floor vents	S	S	S	S	S	S
Rear windscreen wiper with fixed intermittent and auto wipe features	S	S	S	S	S	S
Roof mounted sunglasses stowage	S	S	S	S	S	S
12V power outlet x3 (centre stack, centre console, rear console)	S	S	S	S	S	S
220V inverter in rear console	–	–	S	–	–	S
Second row courtesy light	S	S	S	S	S	S
Second row map/reading lights	–	–	S	–	–	S
<b>Audio and Communication</b>						
Single CD with DAB+/AM/FM radio with 8 speakers	S	S	–	S	S	–
Premium single CD with DAB+/AM/FM radio and 9 speakers	–	–	S	–	–	S
SYNC® 3 connectivity system with Applink™ <sup>11</sup> and enhanced voice control	S	S	S	S	S	S
Apple CarPlay™ <sup>12</sup> and Android Auto™ <sup>13</sup> integration	S	S	S	S	S	S
8" capacitive touch screen	S	S	S	S	S	S
Satellite navigation system with Traffic Message Channel™ <sup>14</sup>	S	S	S	S	S	S
USB Integration (1 port)	S	S	S	S	S	S
Bluetooth® mobile phone integration <sup>15</sup>	S	S	S	S	S	S
iPod Integration <sup>16</sup>	S	S	S	S	S	S
<b>Safety &amp; Driver Assistance</b>						
Active City Stop	–	S	S	–	S	S
Adaptive Cruise Control	–	S	S	–	S	S
Auto Emergency Braking	–	S	S	S	S	S
All Seat Beltminder	S	S	S	S	S	S
Anti-Lock Braking System (ABS) with Dynamic Stability Control™ <sup>17</sup>	S	S	S	S	S	S
Blind Spot Information System	–	–	S	–	–	S
Cruise Control	S	–	–	S	–	–
Driver and passenger airbags	S	S	S	S	S	S
Driver and passenger side front airbags <sup>18</sup>	S	S	S	S	S	S
Emergency Assistance	S	S	S	S	S	S
Enhanced Active Park Assist	–	–	S	–	–	S
Height adjustable seatbelt mounts (front only)	S	S	S	S	S	S
ISOFIX child seat anchorage points	S	S	S	S	S	S
Hill Launch Assist	S	S	S	S	S	S
Inflatable driver's knee airbag	S	S	S	S	S	S
Lane Keeping Aid with Lane Departure Warning	–	S	S	–	S	S
Driver Impairment Monitor	–	S	S	–	S	S
Rear inflatable seat belts (outer 2 only)	S	S	S	S	S	S
Front & Rear Parking Sensors	S	S	S	S	S	S
Rear View Camera	S	S	S	S	S	S
Side curtain airbags	S	S	S	S	S	S
Trailer Sway Control	S	S	S	S	S	S
MyKey™	S	S	S	S	S	S
<b>Security</b>						
Door locks – Child-proof rear door locks (power)	S	S	S	S	S	S
Engine Immobiliser	S	S	S	S	S	S
Remote central double locking	S	S	S	S	S	S
Volume & intrusion sensing & Perimeter alarm	S	S	S	S	S	S

S = Standard – = Not available O = Option that can be ordered before a vehicle is manufactured. P = Part of option pack. A = Accessory

word mark and logos are registered trademarks owned by Bluetooth SIG, Inc. and used under licence by Ford Motor Company. Please visit [www.ford.com.au/compatibility](http://www.ford.com.au/compatibility) for compatible devices. <sup>16</sup> iPod is a trademark of Apple Inc. For compatibility, see iPod Integration page. Please visit [www.ford.com.au/compatibility](http://www.ford.com.au/compatibility) for compatible devices. <sup>17</sup> Dynamic Stability Control is also known as Electronic Stability Control. <sup>18</sup> Front seat side airbags protect front seat occupants only.





### Quality

We design and build your Ford to feel as good after many years of service as it did the day you picked it up. And to drive just as beautifully, too.



### Safety

Ford's Intelligent Protection System uses sophisticated technology designed to help prevent an accident and, if one should happen, to help protect you.



### Sustainability

Using advanced technology, we're committed to creating vehicles with improved fuel economy, reduced CO<sub>2</sub> emissions and a lower overall cost of ownership.



### Smart

Vehicles with smart, intuitive technologies designed to connect you to your world and many clever solutions that make life a little easier.

**Speak to your Ford Dealer today about how we can help you make the most out of your vehicle ownership experience.**

### Complimentary State Auto Club Roadside Assistance and Membership.

Our commitment to your complete satisfaction plays a major role in everything we do. That is why we provide a 12 month Roadside Assistance package including State Auto Club Membership for all Retail and Blue Fleet Customers (with fleets less than 5 vehicles).

This package gives you access to the largest network of roadside assistance providers in the country, so you can be assured that you have non-stop coverage every day of the year.

The benefits of being a member are not limited to the peace of mind of 24/7 roadside assistance. You also have access to a wide range of member benefits including Show Your Card & Save. In addition, you will maintain any benefits accrued through your existing years of membership (where applicable).

Complimentary State Auto Club Roadside Assistance & Membership is valid for eligible Ford vehicles and is available from participating Authorised Ford Dealers only. Visit your local Ford Dealer or refer to [ford.com.au](http://ford.com.au) for more information and full terms and conditions.



### Warranties & Service.

#### 3 year/100,000km new car warranty.#

For three years or 100,000km, whichever comes first, your Ford is covered against any defects in factory materials or workmanship. This also applies to Genuine Ford Accessories you may have had fitted before you took delivery.

#### 5 year warranty against perforation corrosion.#

It's reassuring to know that the original body of your gleaming new Ford is guaranteed against perforation corrosion for the first five years of its life. If perforation corrosion occurs, we'll fix it for free.

#### myFord Warranties and Insurance.

When you first turn the key of your brand new Ford you want to do so without a care in the world. Our range of myFord products gives you that extra peace of mind. For more information about myFord Warranties and Insurance, visit your participating Ford Dealer for further details on the plans that best suit your needs. Terms, conditions and eligibility criteria apply.

#### 12 months/15,000km service intervals.

Under normal driving conditions service intervals are 12 months or 15,000km, whichever occurs first.

## FORD SERVICE

At Ford, we are committed to providing an outstanding ownership experience. For example, we think you should always know what you're going to pay for a standard service, before you go in. So we offer a Service Price Promise for the life of your car, which means we'll publish the maximum price you'll pay for your next A or B logbook service at participating Authorised Ford Dealers on all vehicles built from 2007.

However our service doesn't end at the service garage. With each standard service at a participating Auto Club Dealer, Retail and Small Business

Customers (fleets of less than five vehicles) will also receive up to 12 months Auto Club Membership (including free Roadside Assistance), for up to seven years. Eligible customers will even have access to a free loan car with any scheduled service, through participating dealers. Why do we do all this? Because at Ford, we think that's what service should be.

For more details visit your participating local Ford Dealer or visit [ford.com.au/service/t-and-c](http://ford.com.au/service/t-and-c) for full terms and conditions.

### Want to contact us?

For answers to your questions, or help with any concern, contact our Customer Relationship Centre on 13 FORD (13 3673) or email [customers@fordcrc.com.au](mailto:customers@fordcrc.com.au)

### Visit us on the web.

If you want more information on Ford or our entire product range, visit us at [ford.com.au](http://ford.com.au)

### Running a fleet?

Our Ford Fleet team is available to assist fleet customers with information on Ford products and services. Call 1300 13 13 30 or email [askfleet@ford.com](mailto:askfleet@ford.com)

#Conditions and exclusions apply. For more information consult your authorised Ford Dealer.

This brochure details specifications and features of the MD Mondeo. Some driver assistance features and safety features described in this brochure are designed to function using sensors, whose performance may be affected under certain weather or environmental conditions. Not all features will be available on the entire MD Mondeo model range. Please visit our website [www.ford.com.au](http://www.ford.com.au) for more information.

This brochure is designed to provide you with a general introduction to the Ford Products (including available optional equipment) referred to, and should be read in conjunction with the latest specification sheet. Because of changes in conditions and circumstances Ford\* reserves the right, subject to all applicable laws, at any time, at its discretion, and without notice, to discontinue or change the features, designs, materials, colours and other specifications and the prices of its products, and to either permanently or temporarily withdraw any such products from the market without incurring any liability to any prospective purchaser or purchasers. The latest specification sheet should be referred to for information on the availability, ordering and use of features and optional equipment. Always consult an authorised Ford Dealer for the latest information with respect to features, specifications, prices, optional equipment and availability before deciding to place an order.

\*FORD MOTOR COMPANY OF AUSTRALIA LIMITED. (A.B.N. 30 004 116 223) Registered Office: 600 Victoria St, Richmond, Victoria 3121, Australia. MD Mondeo Brochure. Printed July, 2016. BHFMCO616 FRD0002088



**Go Further**

Click to Request



Quote



Hot Deals



Test Drive





**Norwood**

190 Portrush Road, Trinity Gardens SA, 5068

**Phone:** 1300 13 77 55

**Email:** [info@jarviscars.com.au](mailto:info@jarviscars.com.au)

**Hillcrest**

477 North East Road, Hillcrest SA, 5086

**Phone:** 1300 13 77 55

**Email:** [info@jarviscars.com.au](mailto:info@jarviscars.com.au)

**Gepps Cross - Used Cars**

491 Main North Road, Gepps Cross SA, 5094

**Phone:** 1300 13 77 55

**Email:** [info@jarviscars.com.au](mailto:info@jarviscars.com.au)

